

Алматы (7273)495-231
Ангарск (3955)60-70-56
Архангельск (8182)63-90-72
Астрахань (8512)99-46-04
Барнаул (3852)73-04-60
Белгород (4722)40-23-64
Благовещенск (4162)22-76-07
Брянск (4832)59-03-52
Владивосток (423)249-28-31
Владикавказ (8672)28-90-48
Владимир (4922)49-43-18
Волгоград (844)278-03-48
Вологда (8172)26-41-59
Воронеж (473)204-51-73
Екатеринбург (343)384-55-89

Иваново (4932)77-34-06
Ижевск (3412)26-03-58
Иркутск (395)279-98-46
Казань (843)206-01-48
Калининград (4012)72-03-81
Калуга (4842)92-23-67
Кемерово (3842)65-04-62
Киров (8332)68-02-04
Коломна (4966)23-41-49
Кострома (4942)77-07-48
Краснодар (861)203-40-90
Красноярск (391)204-63-61
Курск (4712)77-13-04
Курган (3522)50-90-47
Липецк (4742)52-20-81

Магнитогорск (3519)55-03-13
Москва (495)268-04-70
Мурманск (8152)59-64-93
Набережные Челны (8552)20-53-41
Нижний Новгород (831)429-08-12
Новокузнецк (3843)20-46-81
Ноябрьск (3496)41-32-12
Новосибирск (383)227-86-73
Омск (3812)21-46-40
Орел (4862)44-53-42
Оренбург (3532)37-68-04
Пенза (8412)22-31-16
Петрозаводск (8142)55-98-37
Псков (8112)59-10-37
Пермь (342)205-81-47

Ростов-на-Дону (863)308-18-15
Рязань (4912)46-61-64
Самара (846)206-03-16
Санкт-Петербург (812)309-46-40
Саратов (845)249-38-78
Севастополь (8692)22-31-93
Саранск (8342)22-96-24
Симферополь (3652)67-13-56
Смоленск (4812)29-41-54
Сочи (862)225-72-31
Ставрополь (8652)20-65-13
Сургут (3462)77-98-35
Сыктывкар (8212)25-95-17
Тамбов (4752)50-40-97
Тверь (4822)63-31-35

Тольятти (8482)63-91-07
Томск (3822)98-41-53
Тула (4872)33-79-87
Тюмень (3452)66-21-18
Ульяновск (8422)24-23-59
Улан-Удэ (3012)59-97-51
Уфа (347)229-48-12
Хабаровск (4212)92-98-04
Чебоксары (8352)28-53-07
Челябинск (351)202-03-61
Череповец (8202)49-02-64
Чита (3022)38-34-83
Якутск (4112)23-90-97
Ярославль (4852)69-52-93

Россия +7(495)268-04-70

Казахстан +7(7172)727-132

Киргизия +996(312)96-26-47

<https://furuno.nt-rt.ru> || fon@nt-rt.ru

HermAce

Remote Monitoring & Troubleshooting Platform

Real-Time Monitoring and Support System
for FURUNO's Navigation & Communication Equipment

HermAce

Preventive and proactive troubleshooting with FU

HermAce, a data compilation system, provides a clear answer to this problem by allowing the status of each machine on board to be monitored over long distances. Until now, in a situation of machine and system dysfunction, it was particularly challenging to obtain in real-time all the detailed information needed to solve a malfunction.

The information sent to the captain and his crew is also sent to the shore-based maintenance team for real-time surveillance. HermAce is designed to be a smooth problem-solving system and to allow the user to make quick and appropriate decisions. By using HermAce, a significant improvement in controlling on-board equipment is obtained. Potential failures can be detected and notified immediately, pursuing the idea of preventive and proactive maintenance.

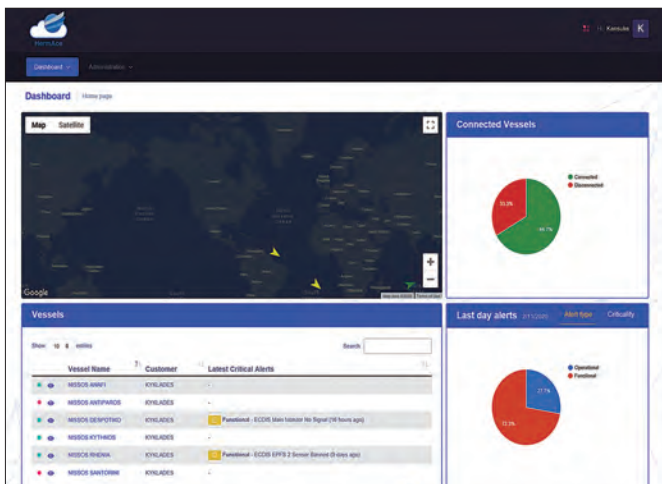
HermAce Features

Innovative Troubleshooting Solution

HermAce is a tool designed to allow constant monitoring of on-board equipment anywhere and anytime you need. Additionally, it allows enhanced monitoring by sending information to both the crew and the shore-based team for better decision making and quick actions.

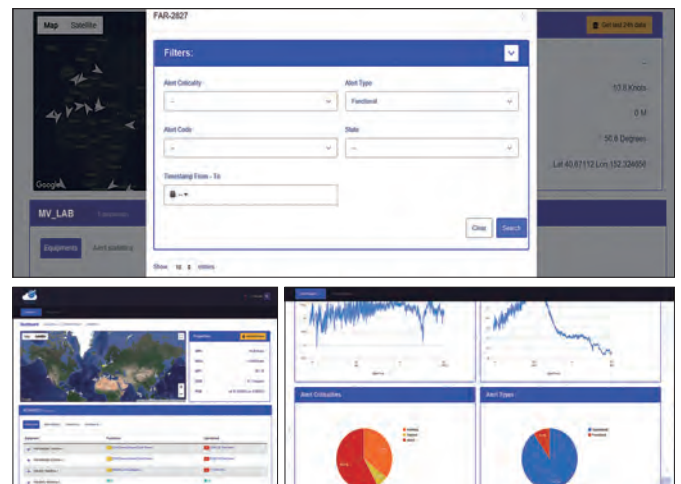
» User Friendly Interface

HermAce's Web-portal's user-friendly interface allows for easy monitoring and smooth navigation thanks to the real-time update of reports and analytical data.



» E-Mail Alert Notification

If an important alert is received, a notification will be immediately sent to the designated e-mails with troubleshooting instructions without having to wait for a crew member's report.



Real-time Remote Monitoring

HermAce is a cloud system connected to Furuno's navigation and communication equipment on board. Critical data pertaining to the vessel's equipment is collected through a smart device; then transmitted to and stored on cloud infrastructure, making it available to customers through a web-portal.

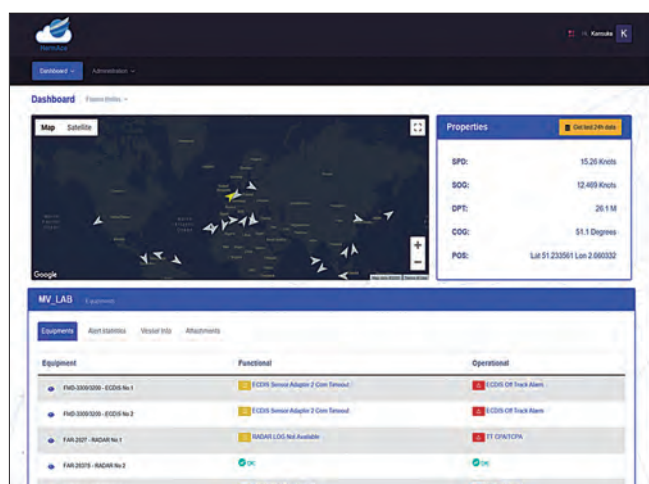
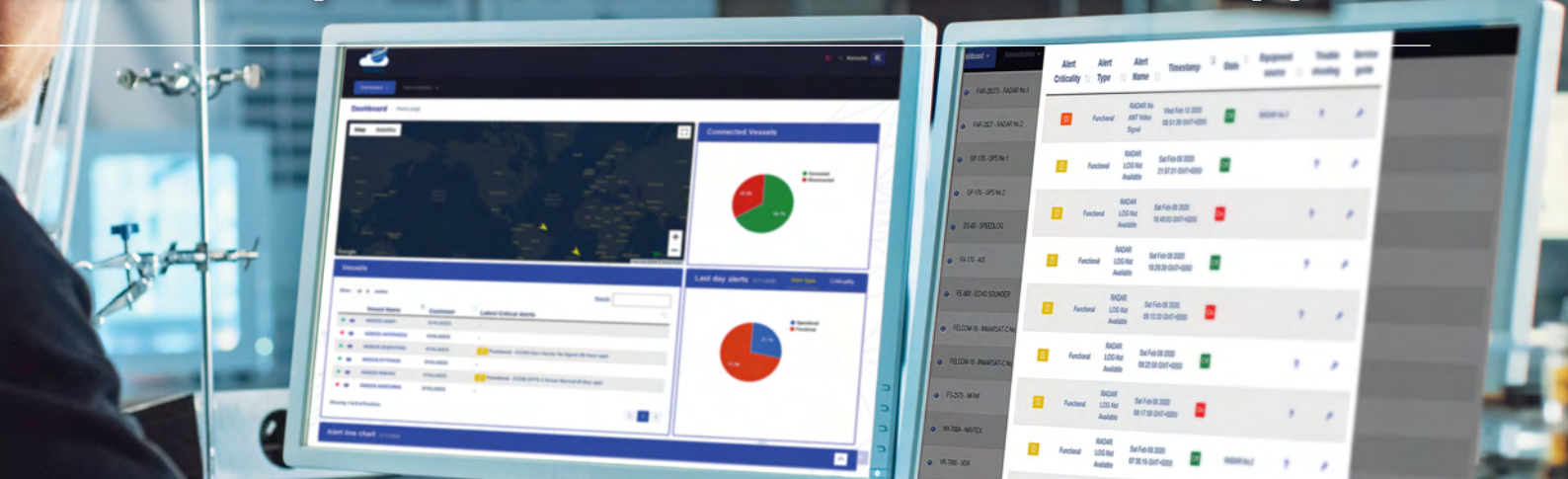
Reliable Connectivity

Thanks to an intelligent algorithm, extreme data compression makes it possible to considerably reduce the volume of information and to transmit this information to a remote server via a satellite communication system such as VSAT.

Easy Access Anywhere, Anytime

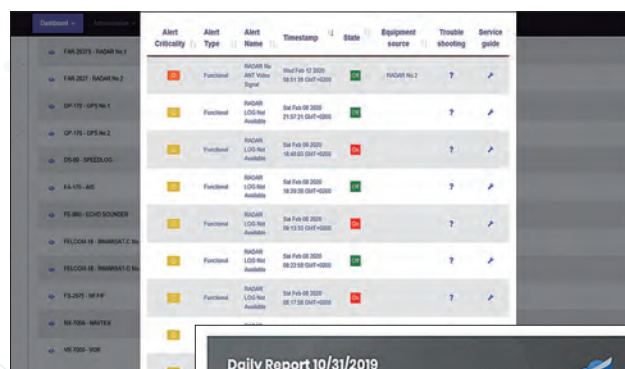
The portal can be accessed anywhere and anytime, provided that an internet connection is available, and it can be viewed on any computer or smartphone.

FURUNO's experience in maintenance and support!

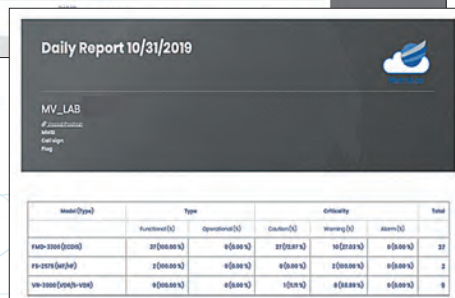


Vessel's Top Menu

All network data can be viewed so that any problem can be quickly resolved.

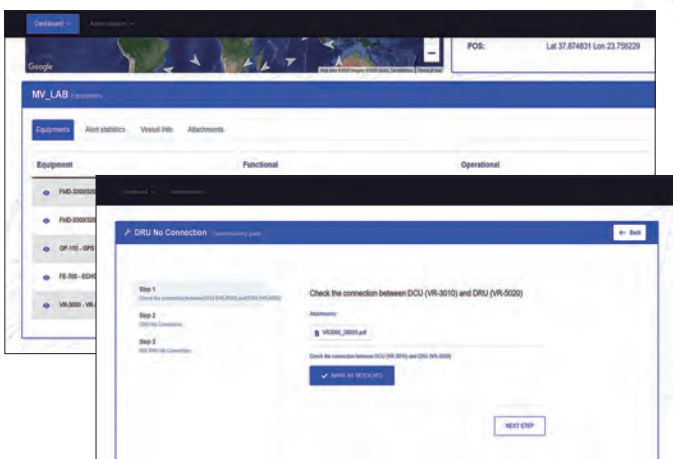


Alert History



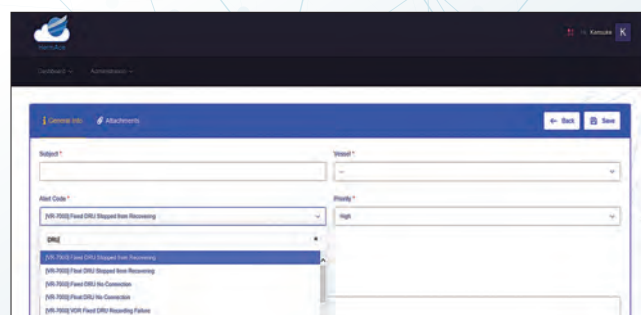
Daily Report

On the portal, it is possible to display the history of alerts and to export a daily report of these events.



Troubleshooting

Achieve cost reduction and efficiency gains, thanks to a powerful and comprehensive troubleshooting solution.



Ticketing

In case further support is needed, ticketing functionality is available through the HermAce portal, this function helps keep the record of events occurring inside the portal and strengthen the communication with Furuno's support team.



Companies relating to the Industrial IoT (IIoT) are investing to develop solutions to manage a large amount of data, quickly and in real time. Furuno's equipment can be interconnected to create a "Furuno Sensor Network", and HermAce is integrated into this Network.

Through this centrally integrated connection, HermAce can monitor critical system data pertaining to the vessel's equipment which is collected through a smart device positioned onboard the vessel and transferred via the ships' satellite communication system to secured data centers.

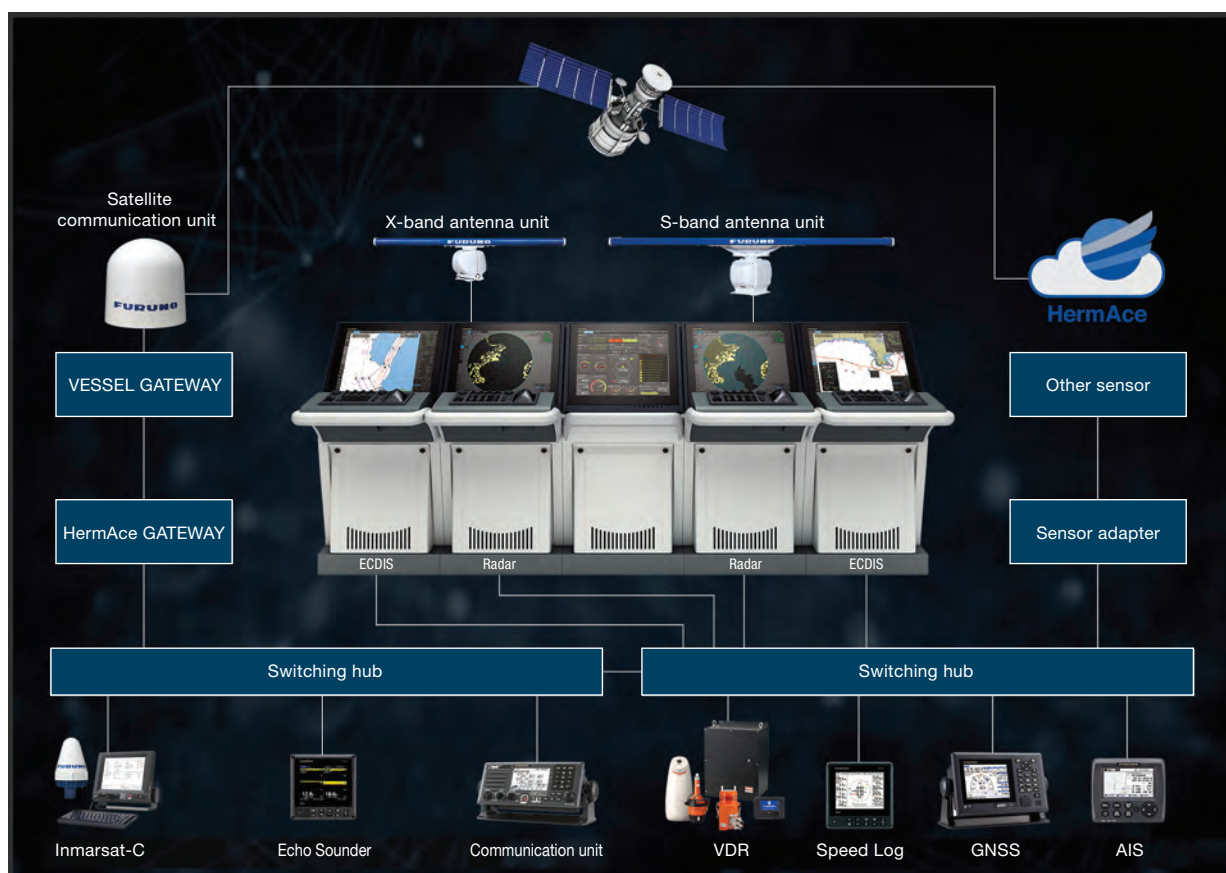


World's First "Digital Twin Ready" Certification Awarded to FURUNO

The first LR validated Digital Health Management (DHM) provider capable of developing, deploying, monitoring and maintaining a reliable digital twin - virtual reproduction of vessel equipment.

This certification provides proof of quality and dependability - that a developer can produce safe, consistent, and reliable digital twins and advance monitoring algorithms to allow shipping companies to operate with less cost of maintenance, unscheduled repairs and with certainty of performance.

Interconnection Diagram



Алматы (7273)495-231
Ангарск (3955)60-70-56
Архангельск (8182)63-90-72
Астрахань (8512)99-46-04
Барнаул (3852)73-04-60
Белгород (4722)40-23-64
Благовещенск (4162)22-76-07
Брянск (4832)59-03-52
Владивосток (423)249-28-31
Владикавказ (8672)28-90-48
Владимир (4922)49-43-18
Волгоград (844)278-03-48
Вологда (8172)26-41-59
Воронеж (473)204-51-73
Екатеринбург (343)384-55-89

Иваново (4932)77-34-06
Ижевск (3412)26-03-58
Иркутск (395)279-98-46
Казань (843)206-01-48
Калининград (4012)72-03-81
Калуга (4842)92-23-67
Кемерово (3842)65-04-62
Киров (8332)68-02-04
Коломна (4966)23-41-49
Кострома (4942)77-07-48
Краснодар (861)203-40-90
Красноярск (391)204-63-61
Курск (4712)77-13-04
Курган (3522)50-90-47
Липецк (4742)52-20-81

Магнитогорск (3519)55-03-13
Москва (495)268-04-70
Мурманск (8152)59-64-93
Набережные Челны (8552)20-53-41
Нижний Новгород (831)429-08-12
Новокузнецк (3843)20-46-81
Ноябрьск (3496)41-32-12
Новосибирск (383)227-86-73
Омск (3812)21-46-40
Орел (4862)44-53-42
Оренбург (3532)37-68-04
Пенза (8412)22-31-16
Петрозаводск (8142)55-98-37
Псков (8112)59-10-37
Пермь (342)205-81-47

Ростов-на-Дону (863)308-18-15
Рязань (4912)46-61-64
Самара (846)206-03-16
Санкт-Петербург (812)309-46-40
Саратов (845)249-38-78
Севастополь (8692)22-31-93
Саранск (8342)22-96-24
Симферополь (3652)67-13-56
Смоленск (4812)29-41-54
Сочи (862)225-72-31
Ставрополь (8652)20-65-13
Сургут (3462)77-98-35
Сыктывкар (8212)25-95-17
Тамбов (4752)50-40-97
Тверь (4822)63-31-35

Тольятти (8482)63-91-07
Томск (3822)98-41-53
Тула (4872)33-79-87
Тюмень (3452)66-21-18
Ульяновск (8422)24-23-59
Улан-Удэ (3012)59-97-51
Уфа (347)229-48-12
Хабаровск (4212)92-98-04
Чебоксары (8352)28-53-07
Челябинск (351)202-03-61
Череповец (8202)49-02-64
Чита (3022)38-34-83
Якутск (4112)23-90-97
Ярославль (4852)69-52-93

Россия +7(495)268-04-70

Казахстан +7(7172)727-132

Киргизия +996(312)96-26-47

<https://furuno.nt-rt.ru> || fon@nt-rt.ru